

# Massachusetts Orchid Society



**August: Jean Stefanik, NHOS**

**Topic: Angraecoids**

Jean is an Educator and Naturalist, semi-retired, whose interests include orchids, native habitats, and conservation. She has traveled extensively worldwide, eco-volunteering and often presenting talks to

groups. She is a member of, and volunteer for the American Orchid Society, and serves as the New Hampshire Orchid Society as Conservation and Education Chairperson, and is a member of the North American Native Orchid Conference.

## Orchid Trivia – World’s Tallest Orchid

*I'm trying something a little different this month – something a little more trivia-like.*



I am the tallest freestanding orchid and come from the perpetually cool high forests of Peru. I am reported to grow up to 44 feet or 13.5 meters high in optimum conditions. More typically I grow to 16.5 ft high in open, sunny areas and 23-26 ft in areas under a low tree canopy. My species name derives from the Latin and refers to my long stems.

My bright reddish-purple flowers are up to 6 inches or 15 centimeters across and are displayed in spectacular groups of up to

8 flowers per stem. My flowers last for two weeks on the plant and one week as a cut flower.

My common name in Quechua (the native Andean language) is “Inquil” or “Inkill”, meaning “bearer of language.” This is due to the wide lip of my large blooms.

My genus consists of about 125 species. Plants of my genus typically have reed-like stems that range in height from about 1 ft to 25–30 ft. They have heavily veined, bilobed, plicate, apical leaves all along the stem. The inflorescences on the apex of the stem carry one or two successive flowers with large sepals and petals. The short duration of the flower is caused by a self-digesting enzyme. Flower in my genus range in color from pure white to yellow, green, pink, purple, red, brown, and even a blue violet.

**What am I?**

Find out at the bottom of page 4.

## Upcoming Events

**August 9<sup>th</sup> –**

Speaker: Jean Stefanik

Topic: Angraecoids

**September 13<sup>th</sup> –**

MOS Annual Auction

Please contact

[brian@massorchid.org](mailto:brian@massorchid.org)

if you would like to donate plants.

**October 11<sup>th</sup> –**

Speaker: Leon Glicenstein,

formerly of Hoosier Orchids



World's Tallest Orchid

Photo:  
[camaradecomercio.comxa.com](http://camaradecomercio.comxa.com)

## MOS Board

### President –

Nick Pavey

[nick@massorchid.org](mailto:nick@massorchid.org)

### Vice President –

Sasha Varsanofieva

[sasha@massorchid.org](mailto:sasha@massorchid.org)

### Secretary –

Joan Blackett

[joan@massorchid.org](mailto:joan@massorchid.org)

### Treasurer –

Jody Maggio

[jody@massorchid.org](mailto:jody@massorchid.org)

### Directors –

Adrienne Giovino

[adrienne@massorchid.org](mailto:adrienne@massorchid.org)

Brigitte Fortin

[brigitte@massorchid.org](mailto:brigitte@massorchid.org)

Derek Scuteri

[derek@massorchid.org](mailto:derek@massorchid.org)

Linda Abrams

[linda@massorchid.org](mailto:linda@massorchid.org)

Susan Flier

[susan@massorchid.org](mailto:susan@massorchid.org)

## Committee Chairs

### Membership –

Susan Flier

[membership@massorchid.org](mailto:membership@massorchid.org)

### Newsletter –

Sasha Varsanofieva

[newsletter@massorchid.org](mailto:newsletter@massorchid.org)

### Annual Show –

Joanna Eckstrom

[show@massorchid.org](mailto:show@massorchid.org)

### Program –

Brigitte Fortin,

Sasha Varsanofieva

[speakers@massorchid.org](mailto:speakers@massorchid.org)



Show table  
photography by  
Brigitte Fortin.

Group of  
Neofinetia falcatas

## Membership

### 2011-2012 dues are due!

If you haven't renewed your membership,  
please send your \$20 annual dues to:

Susan Flier  
27 Colchester Street  
Brookline, MA 02446

Thank you!

## MOS Welcomes New Members

*Tracy Green, Lowell*

*Barbara Byfield, Arlington*

*Joseph Rajunas, Holliston*

## MOS Annual Auction

**Hey folks, it's that time again -  
the MOS Annual Auction time!**

### When?

The Auction is Tuesday, September 13  
(2<sup>nd</sup> Tuesday). We will start at 7pm  
instead of the usual 7:30.

### Where?

Arlington Senior Center  
27 Maple St, Arlington, MA

### What?

Bring your extra/unwanted/other plants.  
This is the perfect time to free up space  
for new plants! (Please make sure plants  
are pest and disease free.) Donated  
plants are tax-deductible as are any  
bids over the fair market value.

### How Can I Help?

If you have plants to donate, please send  
Brian a list so he can post on the website.  
This is the society's biggest fundraiser and it  
will only succeed if we support it!

If you can arrive a little early to help setup,  
it would be greatly appreciated!

### Who Do I Contact?

Please contact Brian Leib:  
[brian@massorchid.org](mailto:brian@massorchid.org)

### Will There Be Show Table?

No, but you can buy some more plants!



## Ask Joan

### Home Remedies and Old Fashioned Cures for Orchids

An occasional column answering questions and providing orchid growing information. Some of this information is derived from the AOS member site and some from fellow MOS members. I've been growing orchids for about eight years, still a beginner, and this is a good way to learn and share. To keep the column lively and timely, please contribute your questions and comments to [joan@massorchid.org](mailto:joan@massorchid.org)

**Dolomite Lime:** Thanks to acid rain here in the Northeast, our water is most likely acid. Our fertilizers are usually acid. Yet, not all orchids grow on the acid side; many grow on limestone outcroppings. Check on the culture of each of your plants to grow them to their full potential. For instance, most Paphs and Phrags grow neutral to alkaline. The remedy is dolomitic lime. This will raise the pH and add magnesium, which is necessary. Plants can absorb fertilizer more easily and will grow faster and bloom more consistently. A light dusting on the surface of the media should help.

**Epsom Salts:** Here is a great source of magnesium, recommended as an additive to fertilizers in the fall for Phals and any other orchid about

to set spikes or buds. Add about a tablespoon per gallon of water.

**Beer:** Some folks swear by beer as an additive to Vandas and Ascocendas, said to grow monster roots, larger than average flowers with more frequent blooming. And that's here in the Northeast. Use the beer right out of the bottle, and let us know the results.

**Cinnamon:** That tin of cinnamon powder in your spice drawer is a natural preventative for common minor orchid ailments. Its anti-fungal, anti-microbial properties will help to heal a newly cut or damaged leaf, and is effective in arresting bacterial rot. Remove any affected areas of the plant until you reach healthy green tissue. Then dust with cinnamon. The drying properties of cinnamon mean it is not good on the roots of the plant.

Thanks to the [Greater New York Orchid Society](http://www.gnyos.org)

## Feeling "Wilty"?

The temperatures in Chicagoland continue to climb, along with the humidity. Across the country, record heat has been recorded. By the end of the day, after working 10 hours in a stifling greenhouse, I feel hot, sticky and "wilty."

Orchids will also get that "wilty" look. The leaves become rubbery and dehydrated, and begin to droop; just like us humans....This can be caused by hot, dry temperatures and too little water getting to the root system. However, comma, these same symptoms can also manifest themselves if the roots are rotted! This phenomenon can happen quickly this time of year if high humidity accompanies the heat. In hot conditions we have the tendency to water more, presuming the plant needs the extra moisture during hot conditions. However, comma, if it is very humid, and the root system stays wet and is not allowed to breathe, it's as if you are "water-boarding" your plants. Your plants are your friends. Don't treat them as hostages!

The best way to diagnose that "wilty" look is to remove the plant and study its contents. If the mix is wet and mold and

the roots are mushy....rot has occurred. If the mix is dry and crunchy, and the roots are white but dry...more moisture is needed.

In either case, it is best to re-pot the plant in fresh media. Put it in a pot that comfortably holds the roots. If rot has occurred, place the plant in a very small pot. This will help it to dry out quickly and new roots will form.

Similar symptoms will occur on mounted plants. Leaves will turn yellow and/or become limp or "wilty." When this happens, take the plant off of its mount, pull off any old moss or potting material, and re-mount the plant.

Repotting or re-mounting the orchid seems to give it new life. Usually, within a week or two, new root growth will appear and the leaves will begin to firm up.

I, on the other hand, require quite different care to become rejuvenated. A cool shower and an ever cooler margarita usually does the trick for me!

Bottoms up! - Liese

## A Tip from Liese Herman Oak Hill Gardens



Reproduced from the Oak Hill Gardens August 2011 newsletter. [www.oakhillgardens.com](http://www.oakhillgardens.com)



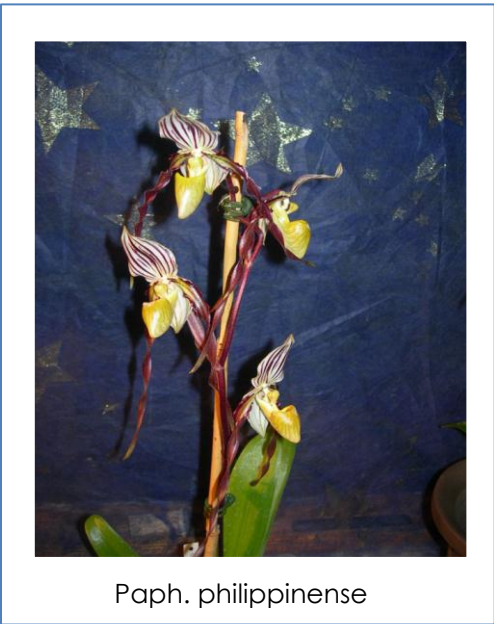


# July Show Table Results

## 17 Plants Awarded

Plant	Owner
Epidendrum mathewsii	Bob Richter
Phal. Violacea Red x Nauvey	Bob Richter
Encyclia ambigua	Bob Richter
Ascofinetia Twinkle	Bob Richter
Sedirea japonica Nagoranshima	Ralph & Chieko Collins
Group of Neofinetia falcatas	Ralph & Chieko Collins
Cynorkis gibbosa	Ralph & Chieko Collins
Paph. niveum	Ralph & Chieko Collins
Oncidium zelenkoanum	Ralph & Chieko Collins
Encyclia conacentra?	Ralph & Chieko Collins
Beallara Pacific Treasure 'Everything Nice'	Tom Gregg
Epidendrum oersteddii	Tom Gregg
Phal. Brother Sara Gold	Tom Gregg
Dtps. Tying Shin Phoenix 'Caribbean Sunset'	Adrienne Giovino
Paph. philippinense	Brian Leib
Paph. Delenatii x Victoria-regina	Brigitte Fortin
Wilsonara Holly Yager	Brigitte Fortin

In an effort to get our meetings started by 7:30, we kindly request that show table plants be ready for judging by **7:15pm.**



Paph. philippinense

**Orchid Trivia Answer:** Sobralia altissima

Paph. Niveum

Dtps. Tying Shin Phoenix 'Caribbean Sunset'

Encyclia ambigua

Epidendrum mathewsii

Bllra. Pacific Treasure 'Everything Nice'

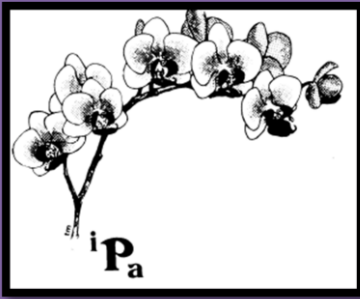
Oncidicum zelenkoanum

Encyclia oerstedii

Phal. Brother Sara Gold

Paph. Delenatii X victoria-regina

Cynorkis gibbosa



## INTERNATIONAL PHALAENOPSIS ALLIANCE

### “FOCUS ON PHALS” DAYS

SEPTEMBER “DOUBLE-  
HEADER” WEEKEND  
FOR NEW ENGLAND &  
NEW YORK

The International Phalaenopsis Alliance (IPA), in cooperation with both the New Hampshire Orchid Society and the Northeastern New York Orchid Society, is presenting two spectacular offerings, in two different locations, of their annual Regional Meeting for the convenience of everyone in the New England, Tri-State and Eastern Canada areas. With the added benefit of AOS Judging at the New Hampshire meeting only, each meeting will present the same program, with Keynote Speaker Norman Fang of Norman's Orchids, Carlos Fighetti, Immediate Past President of the AOS and current First Vice President of the IPA and Carri Raven-Riemann, New England Regional Director, past IPA President and owner of the orchidPhile.

In addition to the featured speakers, each meeting will also feature a mini auction of several select Phalaenopsis, a roundtable discussion on culture, and several plant and supplies vendors. These events are open to everyone, IPA members or not, so we urge you to join us for what is always an informative, fun and relaxing day with both old and new orchid friends. And please note that our minimal registration fee just covers the cost of providing food for everyone attending – IPA will be underwriting the expense of the speakers – so this is a prime opportunity to learn from two very special speakers who would not normally be in our area.

**Registration Forms** – and details of each meeting - are available from three sources:

The IPA Website at [www.phal.org](http://www.phal.org)

Marilyn Shapiro at [mlshap2@juno.com](mailto:mlshap2@juno.com)

Adrienne Giovino at [jpa.adrienne@gmail.com](mailto:jpa.adrienne@gmail.com).

Or download the form here:

<http://www.phal.org/PDF%20Docs/NHOS2011.pdf>

Since space at each event is limited, early registration is strongly encouraged. **For the co-hosting society to plan on sufficient food and seating for all, we're requesting that you make your reservations even**

**earlier than originally noted – for the New Hampshire meeting, please register by August 22 – for the New York meeting, plan to register by August 29.** These earlier registration deadlines will assure that everyone has a chair and that we will have sufficient food for all – both societies are already gearing up, planning the menus and making arrangements to help us ensure two fun and information-packed meetings!

Remember, these deadlines are less than four weeks away so make your plans now!

### New Hampshire

Date: September 10<sup>th</sup>

Location: Bedford Town Hall, 3 Meetinghouse Rd, Bedford, NH

### Program Schedule:

8:30 - 9:15 am	Morning Refreshments & Sales Tables Open
9:30 – 10:15 am	Carlos Fighetti: Phal Species & Their Variants – Are They or Not?
10:30 – 11:15 am	Carri Raven-Riemann: The Best & the Brightest - New Breeding in Taiwan
11:15 – 11:45 am	Mini Auction (to raise funds for future meetings)
11:45 – 12:45 pm	Lunch Break & Sales Tables Open
12:45 – 1:30 pm	Review of the Show Table
1:30 – 2:15 pm	Norman Fang: The Changing of Moss Culture: Tips for Success
2:15 – 2:45 pm	Roundtable Discussion with Speakers
2:45 – 3:30 pm	Open AOS Judging & Sales Tables Open

## Upcoming Events

<b>Date &amp; Time</b>	<b>Event</b>	<b>Location</b>
Sat, September 3, 10:30am	Monthly Regional AOS Judging	Tower Hill Botanic Garden 11 French Drive, Boylston, MA
Sat, September 10, All Day	"Focus on Phals" Day (please see page 5)	Bedford Town Hall 3 Meetinghouse Rd, Bedford, NH
Tue, September 13, 7:30pm	MOS Annual Auction	Arlington Senior Center 27 Maple St, Arlington, MA
Sat, October 1, 10:30am	Monthly Regional AOS Judging	Tower Hill Botanic Garden 11 French Drive, Boylston, MA
Tue, October 11, 7:30pm	Monthly MOS Meeting	Arlington Senior Center 27 Maple St, Arlington, MA
Fri-Sun, November 4-6	"A New England Rainforest" MOS Annual Show & Sale	Tower Hill Botanic Garden 11 French Drive, Boylston, MA



**Massachusetts  
Orchid Society**

